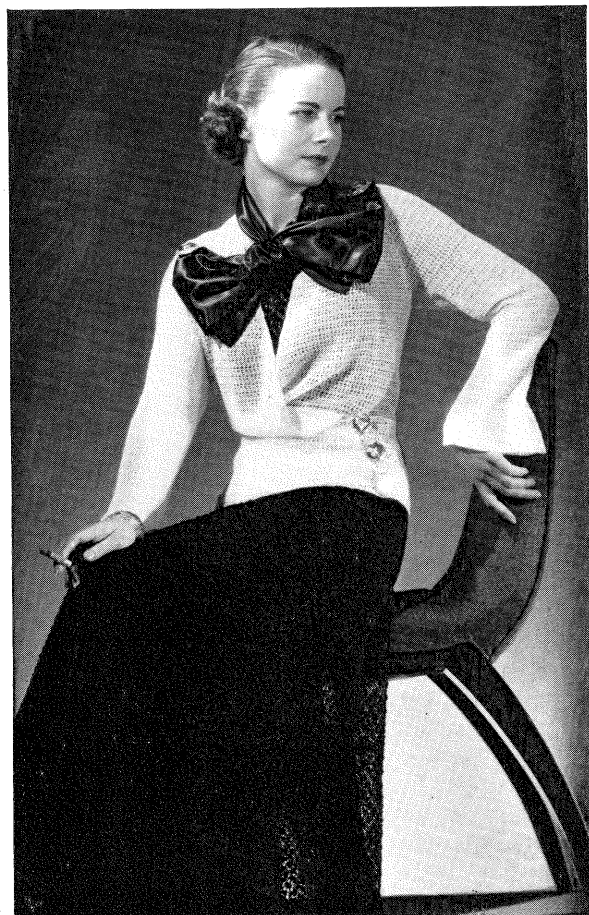


I N S T R U C T I O N S

HOW TO MAKE THE GARMENTS SHOWN IN THIS BOOK



JACKET FOR ALORA No. 3300

No. 3300—EVENING GOWN AND JACKET

Size 16 to 18

1 Pr. M. M. No. 4. Needles—14 inch

1 No. 2 Steel Crochet Hook

1 M. M. No. 3½ Crochet Hook

Scale:—Gown—2 Patterns to 1 inch

Jacket—4 sts. to 1 inch

MINERVA BOUCLE YARN

	Black	White
	No. 1346	No. 1300
Gown	40 Balls	
Jacket		14 Balls

EVENING GOWN—

BODICE—Front—Cast on 88 sts., P. 1 row. (Lace Pattern is worked on a multiple of 4 sts. and 4 rows to a pattern.)

Row 1—In first st., * K. 1, P. 1, K. 1 (all on one stitch). Slip next st., K. 2 sts. together, pass slip st. over the 2 sts. knitted together, repeat from * across row.

Row 2—Purl.

Row 3—* slip first st., K. 2 sts. together, pass slip st. over, K. 1, P. 1, K. 1 (all on one stitch).

Repeat from * across row.

Row 4—Purl.

Repeat rows 1 to 4 two more times (12 rows).

Row 13—Same as Row 1, casting on 4 sts. at end of row.

Row 14—Purl, cast on 4 sts. at end of row.

Row 15—Same as Row 3 (96 sts. on needle).

Work even for 12 more rows.

Row 28—Purl 31 sts., then increase 4 sts. as follows: Pick up one thread between sts., K. 1 st., P. 1 st., on this thread. P. the next st. then pick up another thread and K. 1 st., P. 1 st. on this thread. (All increases across row are made in this manner throughout work to keep pattern even.) Work 31 sts., increase 4 sts., P. remaining 32 sts. (104 sts.). Work 3 rows even, cast on 4 sts. at end of each of the next 2 rows (112 sts.). Work 6 rows even.

Next row P. 31 sts., increase 4 sts., P. 23 sts., increase 4 sts., P. 23 sts., increase 4 sts., P. remaining 32 sts. (124 sts.). Work 8 rows even.

On next K. row decrease for armhole as follows: K. 2 sts. together, K. 2 sts. together, pass first st. over second st., K. next st., pass first st. over second st. (4 sts. bound off). Continue lace pattern as usual across row.

At beginning of Purl row bind off 4 sts. as before.

Repeat last 2 rows 2 more times (100 sts. on needle). Work 4 rows even.

At beginning of next 2 rows bind off 4 sts. as before (92 sts.), work 22 rows even.

On next K. row work 28 sts., bind off 36 sts. for neck opening and on remaining 28 sts. work even for 24 rows to shoulder, bind off. Work other shoulder the same.

BACK—Cast on 76 sts., work same as front for 10 rows, then work 36 sts., bind off 4 sts. slip the last st. from right hand needle to left hand needle and K. 1, P. 1, K. 1, in this st., then continue pattern to end of row. (There are 36 sts. at each side of the 4 bound off sts.)

At underarm side cast on 4 sts., P. 40 sts., slip other 36 sts. on to a stitch holder. Work 4 rows even.

At beginning of next row at back opening bind off 4 sts. same as at armhole of front. After binding off 4 sts., K. 2 together and pass st. over the K. 2 together, continue lace pattern to end of row. Work 5 rows even.

Increase 4 sts. at end of next row (underarm side). Back opening is worked even to shoulder. Work 22 rows even, then bind off armhole same as at front (28 sts. on needle). Work 40 rows even to shoulder. Work other side to correspond.

SKIRT—(Worked in 3 gores).

FRONT GORE—Top—Cast on 60 sts. Work same as front of bodice for 21 rows.

Row 22—P. 20 sts., increase 4 sts., P. 19 sts., increase 4 sts., P. remaining 19 sts. (68 sts.). Work 21 rows even.

Row 44—P. 16 sts., increase 4 sts., P. 15 sts., increase 4 sts., P. 15 sts., increase 4 sts., P. the remaining 19 sts. (80 sts.). Work 11 rows even.

P. 16, increase 4, P. 15, increase 4, P. 15, increase 4, P. 15, increase 4, P. the remaining 15 (96 sts.). Work 17 rows even.

P. 23, increase 4, P. 23, increase 4, P. 23, increase 4, P. the remaining 24 (108 sts.). Work 17 rows even.

P. 20, increase 4, P. 23, increase 4, P. 23 increase 4, P. 23, increase 4, P. the remaining 15 (124 sts.). Work 13 rows even.

P. 19, increase 4 P. 19 increase 4, P. 19, increase 4, P. 19, increase 4, P. 19, increase 4, P. the remaining 24 sts. (144 sts.). Work 13 rows even.

P. 32, increase 4, P. 23, increase 4, P. 23, increase 4, P. 23, increase 4, P. remaining 39 sts. (160 sts.). Work 13 rows even.

P. 31, increase 4, P. 23, increase 4, P. 23, increase 4, P. 23, increase 4, P. 23, increase 4, P. the remaining 32 sts. (180 sts.). Work 13 rows even.

P. 36, increase 4, P. 35, increase 4, P. 35, increase 4, P. 35, increase 4, P. remaining 35 sts. (196 sts.). Work 13 rows even.

P. 31, increase 4, P. 31, increase 4, P. 31, increase 4, P. 31, increase 4, P. 31, increase 4, P. remaining 36 sts. (216 sts.). Work 17 rows even.

P. 43, increase 4, P. 43, increase 4, P. 43, increase 4, P. 43, increase 4, P. remaining 40 sts. (232 sts.). Work 17 rows even.

P. 45, increase 4, P. 45, increase 4, P. 45, increase 4, P. 45, increase 4, P. remaining 48 sts. (248 sts.). Work 23 rows or desired length, bind off.

BACK GORE—Work in same manner as front gore. After the last 23 rows even, bind off 32 sts., P. to end of row. Work knit row of lace pattern even, then bind off 8 sts. every other row 5 times, then bind off 4 sts. every other row 8 times, then bind off 8 sts. every other row 2 times. Bind off remaining 128 sts.

Work other back gore the same, binding off sts. on knit rows instead of purled rows to correspond.

Sew the 3 gores together neatly, leaving a 5 inch opening at left front for placket. Work picot edge at front edge of placket and 3 rows of S. C. on back edge for underlap.

Now work beading around top of skirt as follows: Ch. 5, * skip 2 sts., 1 D. C. in next st., Ch. 2, repeat from * around.

Sew shoulder seams of blouse, gathering shoulder to 2 inch width, then sew underarm seams, leaving 2½ inch opening at left underarm at waistline. Crochet beading around bottom of blouse. Work 1 row S. C. around armholes and neck opening, omitting the bound off sts. of front, then work picot edge around armholes, neck opening and bottom of skirt.

Join skirt to bodice with back seam of skirt to center back of bodice by drawing elastic through both beadings (except across opening). Fasten with snap fasteners at bodice and skirt opening.

Use 4 inch double faced satin ribbon for belt. Sew to rhinestone buckle to match clips at shoulder.

EVENING JACKET—

BACK—Starting at neck Ch. 25, skip first Ch. Work 1 S. C. in each Ch., Ch. 1, turn, then pick up back loop in one row and front loop in next row, alternately (flat side is right side). increase 1 st. at beginning of each row (2 S. C. in first st.), 42 rows to underarm.

Now work even for 16 rows, then skip first st. in next 2 rows (decreasing 1 st. each row). Work 7 rows even, decrease as before. Work 7 rows even.

Now increase 1 st. at each side every 6th row 3 times for 18 rows (94 rows from start), then skip 12 sts. at end of each of the next 2 rows, then skip 5 sts. at end of each of the next 4 rows, break yarn. Attach yarn at one side and work 1 more row across to other side, break yarn.

RIGHT FRONT—Starting at neck Ch. 3, work in same manner as back, increasing 1 st. every 4th row at front edge and increase armhole same as back (work 2 sts. in first st. every other row) for 42 rows, then add a Ch. of 4 sts. for underarm.

Work underarm side same as back. After last 18 rows, break yarn (94 rows from start).

Work left front to correspond.

SLEEVES—Starting at top Ch. 11, work same as back for 34 rows, increasing 1 st. at beginning of each row, then increase 2 sts. at beginning of each of the next 8 rows, add a Ch. of 4 sts. at one side (front) for underarm.

* Work 12 rows even, then decrease 1 S. C. each side, repeat from * 2 more times. Work 6 rows even, then increase 1 S. C. each side every 5th row 4 times, then leave off 10 sts. at end of each of the next two rows, then leave off 5 sts. at end of each of the next 4 rows.

Work 1 row S. C. across bottom of sleeve. Work other sleeve to correspond.

Sew sleeves in place, sew underarm seams.

Work 1 row S. C. at front edge, chain 3 loops for buttons and trim with 7 inch black satin bow, held in place with 2 large crystal buttons as illustrated.